

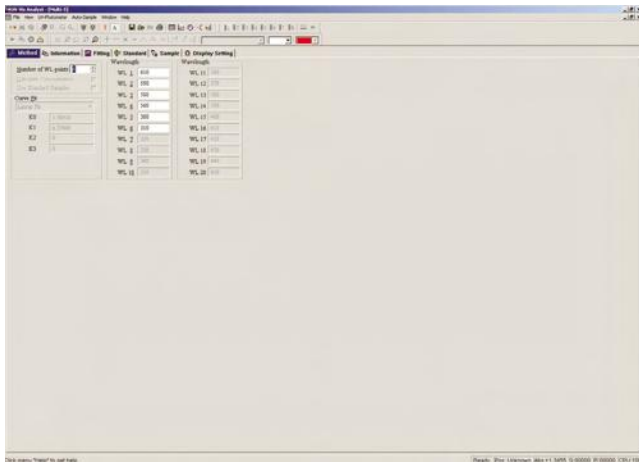
Optional Advanced Windows-Based Application Software

The SpectroQuest Windows®-based PC application software takes the best features of the integrated operating software plus more powerful data processing and expanded data collection and storage capability. It comes standard with SpectroQuest PC models (SQ-2802PC and SQ-2802PCS) and is optional on all other SpectroQuest models.

The PC application software offers:

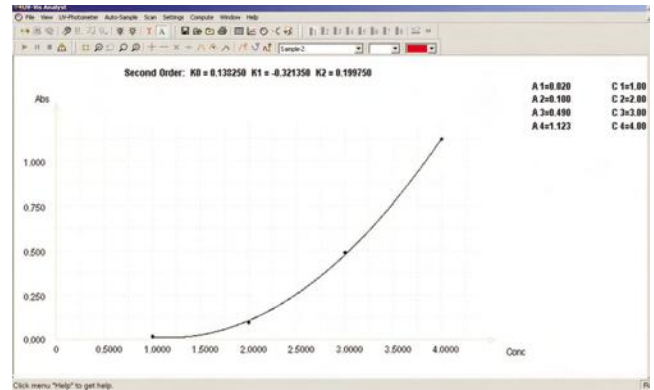
1. Abs/%T/Conc Test
2. Quantitative (standard curve)
3. Kinetics
4. Multi-wavelength Test
5. Wavelength Scanning
6. DNA/Protein

Multi-Wavelength



Up to 32 wavelengths can be selected and multiple samples can be measured. (Auto cell changer is required to run multiple samples automatically).

Quantitative (Standard Curve)

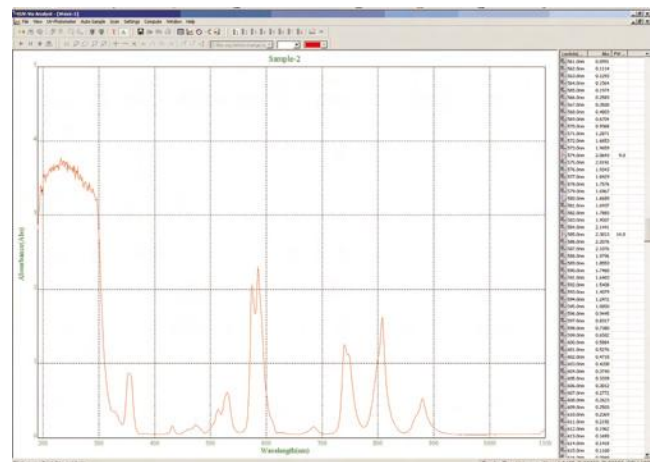


Use up to 32 standards to establish standard curve.

Four methods for fitting a curve:

1. Linear fit
2. Linear through zero
3. Square fit
4. Segmented

Wavelength Scanning



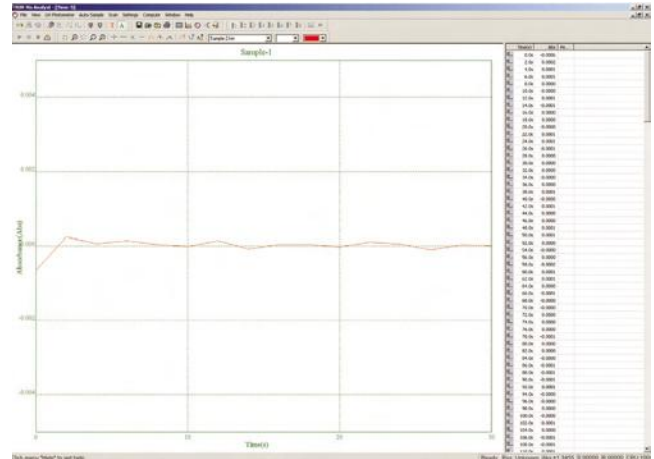
Automatically record peaks and valleys. Eight channels can simultaneously store up to 8 curves. Post-run manipulation and processing includes:

1. Re-scaling axes, curve
2. Smoothing, combination, zooming, overlap...
3. 1st to 4th derivative



The SpectroQuest Windows-based PC application software takes the best features of the integrated operating software plus more powerful data processing and expanded data collection and storage capability. It comes standard with SpectroQuest PC models (SQ-2802PC and SQ-2802PCS) and is optional on all other SpectroQuest models.

Kinetics (Abs vs. Time)



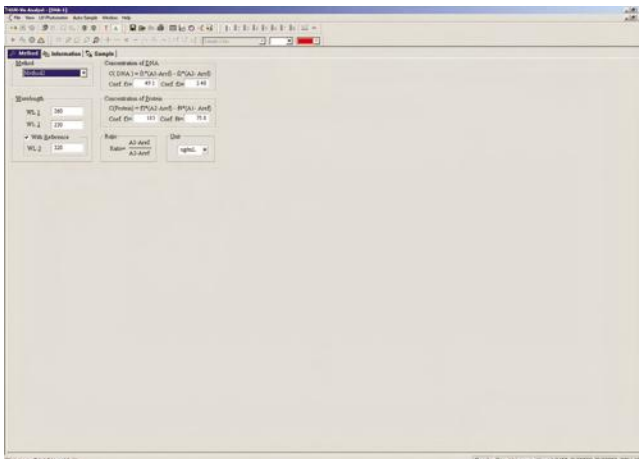
The Kinetics mode may be used for time course scanning or reaction rate calculations. Abs. vs. time graphs is displayed on the screen in real time.

Wait time, measurement time and time intervals may be entered. Post-run manipulation includes re-scaling, curve tracking and selection of the part of the curve required for the rate calculation. Rate is calculated using a linear regression algorithm before multiplying by the entered factor.

Data Download Software (Cat. No. 2800-405)

The basic data download software is designed to download data stored in the spectrophotometer memory to a PC in a text file format for easy exporting into a spreadsheet.

DNA/Protein



Concentration and DNA purity are quickly and easily calculated: Absorbance ratios 260nm/280nm with optional subtracted absorbance at 320nm.

$$\text{DNA Concentration} = 62.9 \times A_{260} - 36.0 \times A_{280}$$

$$\text{Protein Concentration} = 1552 \times A_{260} - 757.3 \times A_{280}$$

Other wavelengths and factors may be entered.

Item No.	Description
SQ2800-401	Advanced Application Software for PC's (for SQ-2800 series)
SQ2800-405	Basic Data Download Software (for SQ-2800 and SQ-2802 models)
SQ3802-401	Advanced Application Software for PC's (for SQ-3800 series)
SQ4802-401	Advanced Application Software for PC's (for SQ-4800 series)

Se habla español. Visítenos en el Internet:
www.unicosci.com/espanol
 o llámenos por teléfono al 609-240-5507.